

UPPER ROOF LAYOUT

Trusstech SA Pty Ltd  
ABN: 40 1 318 22 140 16 High Street Dry Creek SA 5094 Ph: 08 8260 6006



OAKRIDGE  
BUILDING SERVICES

PH : 83837222  
FAX : 83837225

CONVENTIONAL TIMBER DETAILS

TRUSS DETAILS  
TRUSSES & BRACING TO BE INSTALLED, ERECTED & BRACED IN ACCORDANCE WITH AS4440-2004  
STABILIZER/HANGER @ 1800 CTS MAX UNO  
BEARING WIDTH FOR TRUSSES 90mm UNO  
TS = TRUNCATED STANDARD  
TG = TRUNCATED GIRDER

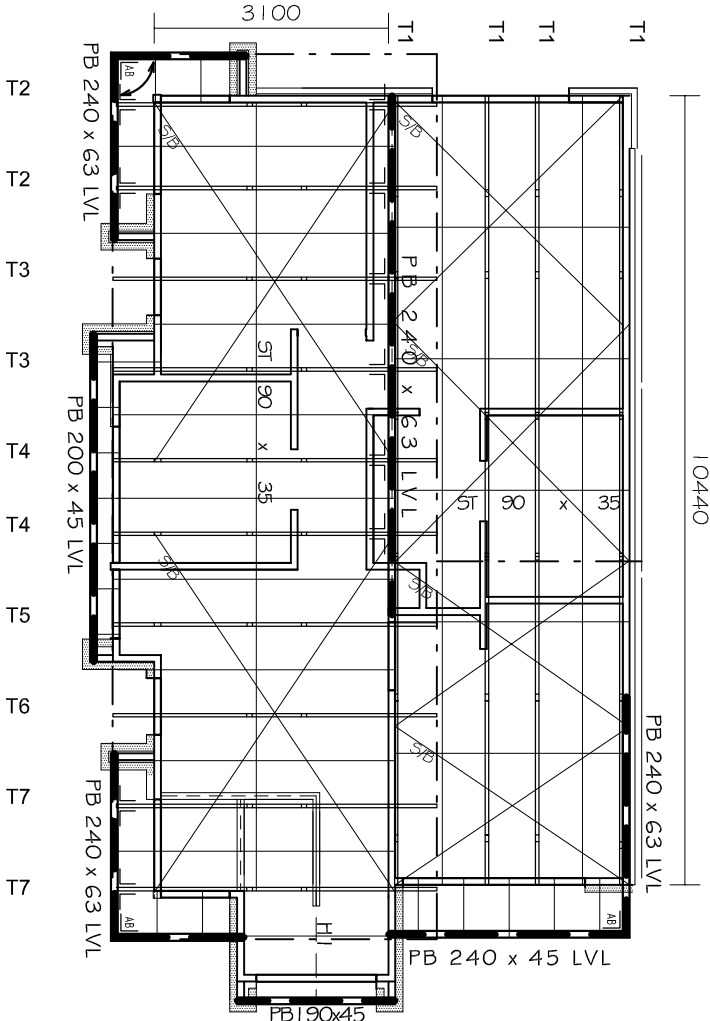
S/B = SPEED BRACE  
SV = SCOTCH VALLEY

NOTE: TRUSSES & JOISTS TO BE POSITIONED DIRECTLY OVER STUDS

UNLESS SHOWN OTHERWISE ON LAYOUT, NO SPECIAL LOADS HAVE BEEN ALLOWED.  
EG - AC UNITS, SOLAR PANELS ETC.

MINIMUM BEARING WIDTH FOR TIMBER TRUSSES SHOULD BE 70MM. FOR BEARING WIDTH LESS THAN 70MM, CONFIRMATION FROM THE TRUSS ENGINEER SHOULD BE SOUGHT.

TRUNCATED GIRDER HAS BEEN DESIGNED TO CARRY CONVENTIONAL HIP END TIMBER (RAFTERS, HANGING BEAMS & HIPs)  
X = INTERNAL SUPPORT / CANTILEVER POINT



PURLINS : 90x45 MGP10 @ 900mm cts  
generally with maximum endspans of 900mm  
\* JOINTS TO BE STAGGERED

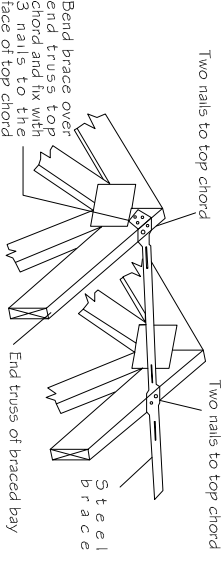
RAFTERS 120x35 MGP10 @ 600 CTS FOR TILES & 1200 CTS FOR IRON UNO  
HIPS LOWER 190x35 MGP10 UNO  
HIPS UPPER 120x35 MGP10 UNO  
VT= VALLEY TRIM 120x35 MGP10  
RP= RAKING PLATE 190 x 45 MPG10  
RIDGE 140x35 MGP10 UNO  
UNDERPURLINS 130x63 LVL

COLLAR TIES 90x35 M10 @ 1200 cts < 4.2m  
120x35 M10 @ 1200 cts > 4.2m  
ALL MATERIALS ALLOWED AS PER AS 1684.2-2010

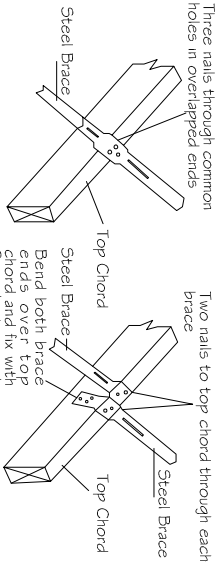
HANGERS:  
H1 = 120x35 MGP10  
H2 = 140x35 MGP10  
H3 = 190x35 MGP10  
H4 = 190x45 MGP10

● DENOTES STRUTTING POINT  
FAN STRUT POINT 90x70  
WITH 290x35 SPREADERS

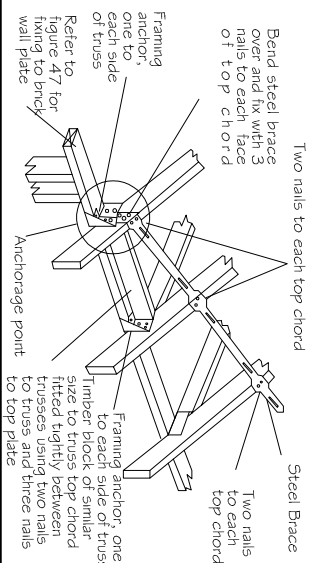
SPEED BRACE FIXING DETAILS AT APEX



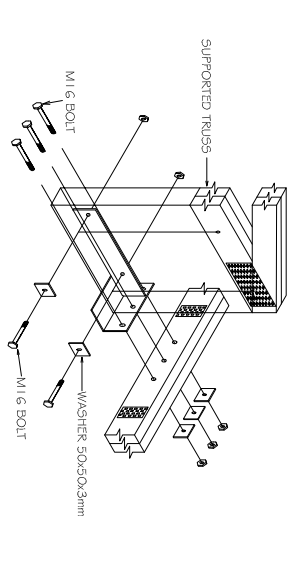
SPEED BRACE SPLICING DETAILS



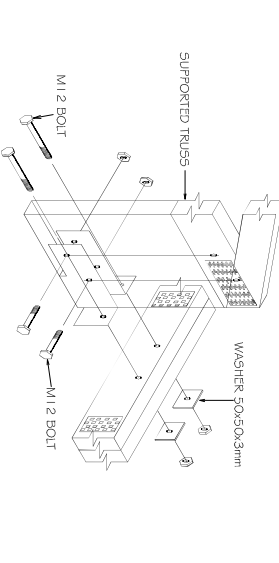
SPEED BRACE FIXING DETAILS AT HEEL



HIGH-LOAD TRUSS BOOT



TRUSS BOOT



DWELLING 1

Timber: H0 Dry Swd (can include KD Hwd)	Roofing: Metal Sheet	Wind / Ext / Int: N1 / 0.9 / 0.2	Customer: D'ANDREA Site Address: 541 ANZAC HWY, GLENELG EAST	SHEET 4/5	
Pitch: 10.0 Deg	TC fix/rest: Metal @ 1200c / 1200	Structural Fascia Type: No As per AS 1684.1		Date: 25/05/2018	
Overhang: 0 mm	Ceiling: Plaster 10mm Supa Span	Ground Snow Load: Sg = 0 kPa		Scale: 1 : 100	
Spacing: 1200mm	BC fix/rest: Metal direct @ 600c / 600	Structure Type: House	Detailer: Matt Ope	Signed:	Job No: TT09727

S:\OAKRIDGE TAKEOFFS\D\ANDREA\541 ANZAC HWY\D1\D1 541 ANZAC.dwg